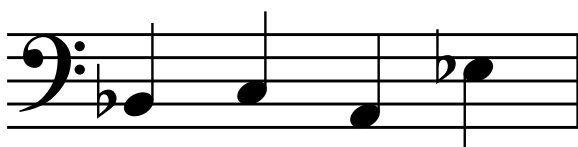
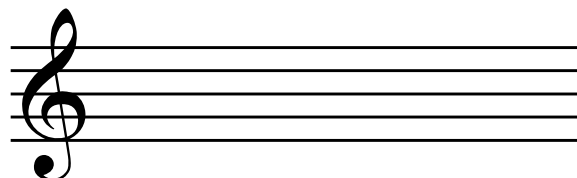
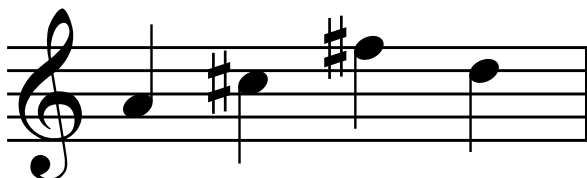


LESSON 6
REVIEW

Key Signatures

Look at the musical examples on the left. These examples have **sharps** or **flats** but no **key signature**. In the **staff** on the right, draw the same **notes**, without **sharps** or **flats**, and add the correct **key signature**.



Draw the **key signature** with three **flats**. We've drawn the first **flat** for you.



Draw the **key signature** with three **sharps**. We've drawn the first **sharp** for you.



Below are three pairs of **key signatures**. In each pair, one is drawn correctly and one is drawn incorrectly. Circle the correct **key signature** in each pair.



OR



OR



OR



LESSON 7

Naming Key Signatures

The **flats** or **sharps** in a **key signature** follow a pattern. Here's the pattern for **sharp key signatures**:



1st # on F
Key of G



2nd # on C
Key of D



3rd # on G
Key of A



4th # on D
Key of E

Here's the pattern for **flat key signatures**:



1st ♭ on B
Key of F



2nd ♭ on E
Key of Bb



3rd ♭ on A
Key of Eb



4th ♭ on D
Key of Ab

There can be as many as seven **flats** or **sharps** in a **key signature**, but you'll rarely see more than four. For this book, we'll use no more than four.

Every **key signature** is named after a **note** (and every **note** has a **key signature**). A piece of music is said to be in the "key of G" or the "key of Bb" and so forth. We've labeled the **key signature** names for the eight keys shown above. Here's how to identify **key signatures**.

For **sharp key signatures**, find the last **sharp** in the **key signature**. Then count up to the next

line or space. That **note** is the name of the **key signature**.



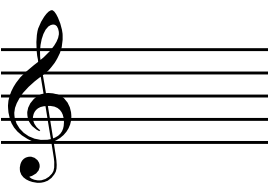

For **flat key signatures**, find the last **flat** in the **key signature**. Think of this as "four," then count down the lines and spaces of the **staff** to "one." The note on "one" is the name for the **key signature**.

What if a piece of music has no **key signature**... no **sharps** or **flats** after the **clef sign**? Music with no **key signature** is the key of C.

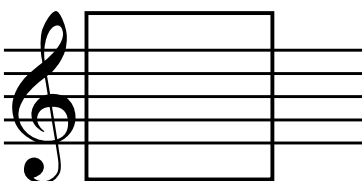
LESSON 7
REVIEW*Naming Key Signatures*

Identify the following **key signatures**.

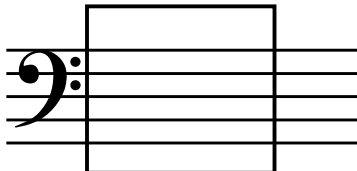
Write the correct name of each **key signature** on the line provided.

1.  _____4.  _____2.  _____5.  _____3.  _____6.  _____

In the box, write the correct **sharps** for the following **sharp key signatures**.

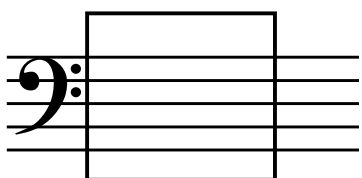
1. 

Key of G

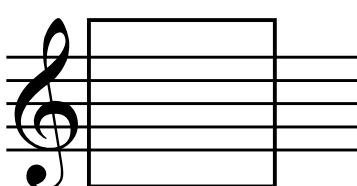
2. 

Key of A

In the box, write the correct **flats** for the following **flat key signatures**.

1. 

Key of B \flat

2. 

Key of F